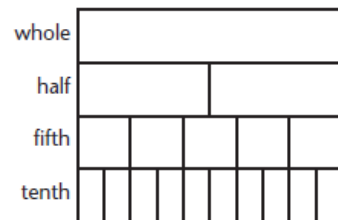
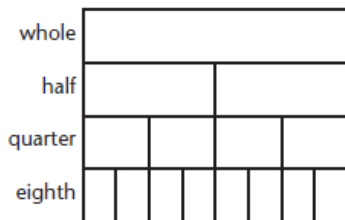
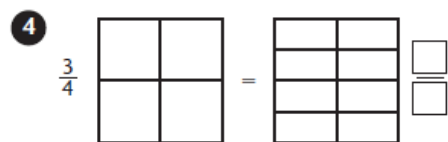
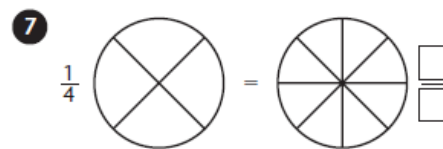
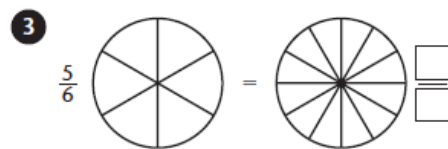
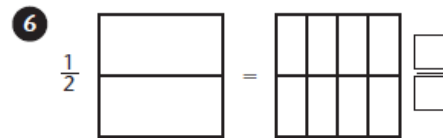
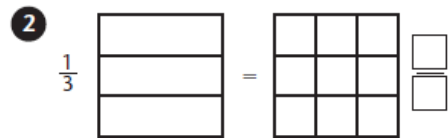
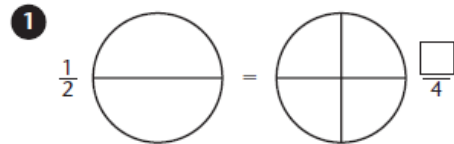


Sheet 26 EQUIVALENT FRACTIONS

Colour in the diagrams to show each pair of equivalent fractions.
Write the missing fraction.



Use the fraction charts to complete the equivalent fractions.

9 $\frac{1}{6} = \frac{\square}{12}$

11 $\frac{1}{4} = \frac{\square}{12}$

13 $\frac{1}{2} = \frac{\square}{10}$

15 $\frac{2}{3} = \frac{\square}{9}$

10 $\frac{2}{5} = \frac{\square}{10}$

12 $\frac{2}{3} = \frac{\square}{6}$

14 $\frac{3}{4} = \frac{\square}{8}$

16 $\frac{4}{5} = \frac{\square}{10}$

(Answers below)

HS26

$$1 \frac{2}{4}$$

$$2 \frac{3}{9}$$

$$3 \frac{10}{12}$$

$$4 \frac{6}{8}$$

$$5 \frac{6}{9}$$

$$6 \frac{4}{8}$$

$$7 \frac{2}{8}$$

$$8 \frac{8}{10}$$

$$9 \frac{2}{12}$$

$$10 \frac{4}{10}$$

$$11 \frac{3}{12}$$

$$12 \frac{4}{6}$$

$$13 \frac{5}{10}$$

$$14 \frac{6}{8}$$

$$15 \frac{6}{9}$$

$$16 \frac{8}{10}$$